



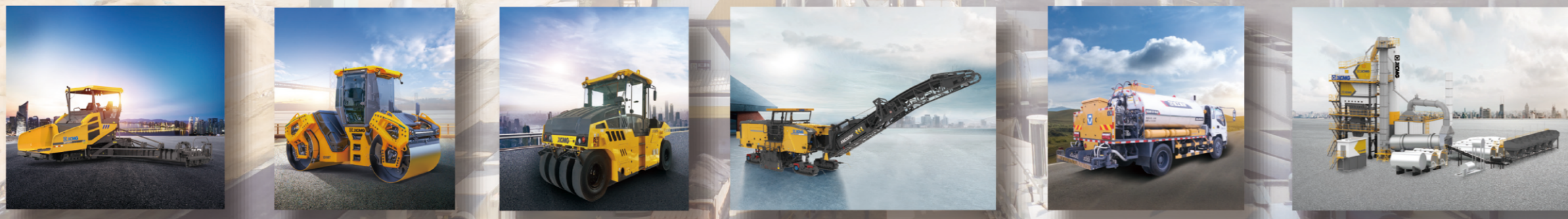
XCMG Road Machinery Business Unit, ranking among the top three global road machinery manufacturers, has the world's largest manufacturing base for construction and maintenance machinery. It has consistently ranked first in the domestic industry for a long time, first among the top 10 global pavement construction machinery companies in terms of sales growth rate, first globally in terms of product completeness, and first in the world in terms of sales volume of large-tonnage road rollers, with the most extensive range of digital and intelligent construction applications in the world. Its business is integrated with the development, manufacturing and sales of engineering machinery such as compaction machinery, earthmoving machinery, paving machinery, mixing machinery, and maintenance machinery. The products cover 10 major categories and are widely applied to various fields of infrastructure construction such as highways, railways, airports, bridges, mines, hydroelectric energy, and telecommunications engineering. A number of products are developed on the basis of abundant experience, leading the development of the industry. Moreover, XCMG has vigorously explored international markets and accelerated product exports and overseas plant construction.

At present, XCMG products are exported to more than 190 countries and regions, covering 95% of the countries along the "Belt and Road", ranking the first. It has established more than 2,000 overseas outlets worldwide to provide users with comprehensive marketing services.

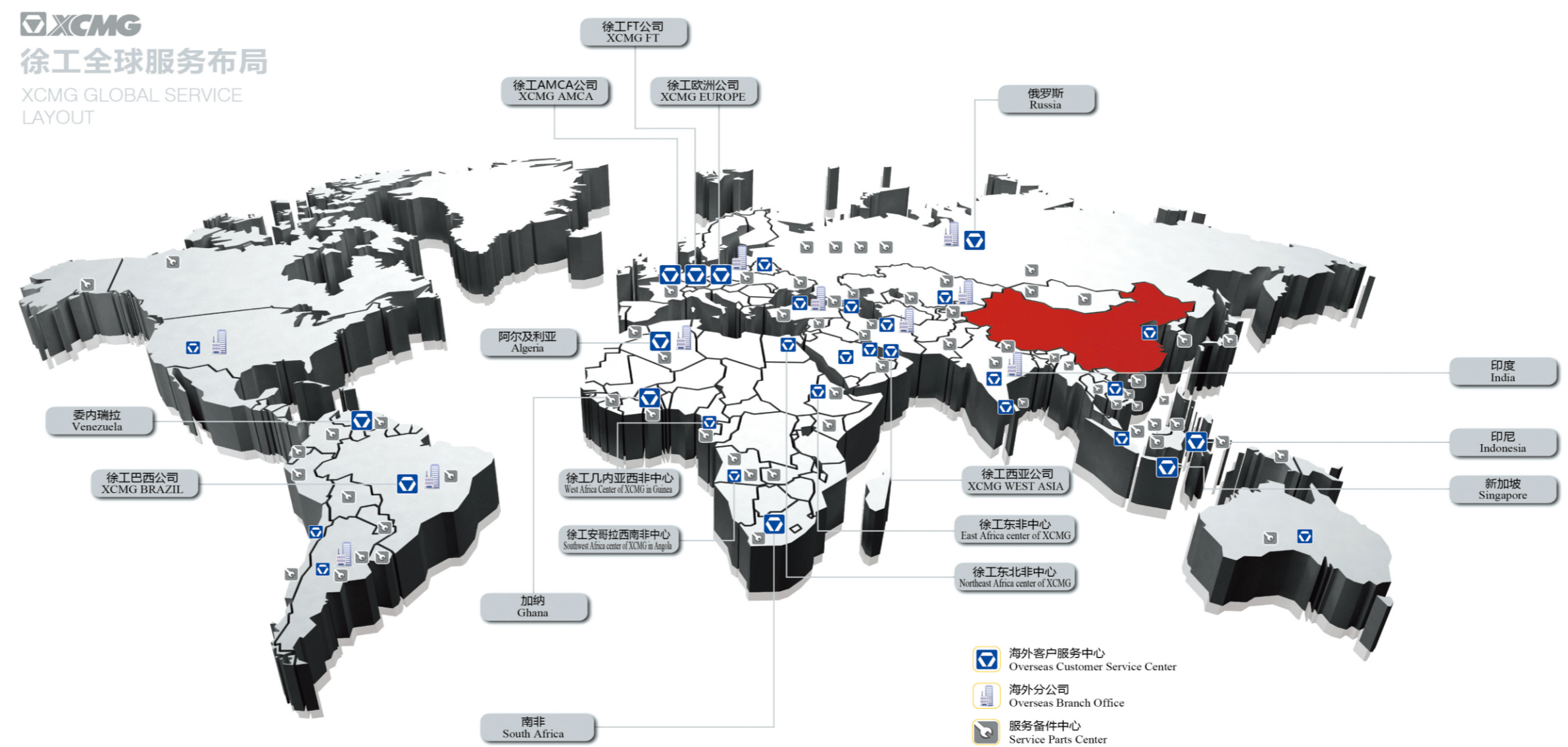
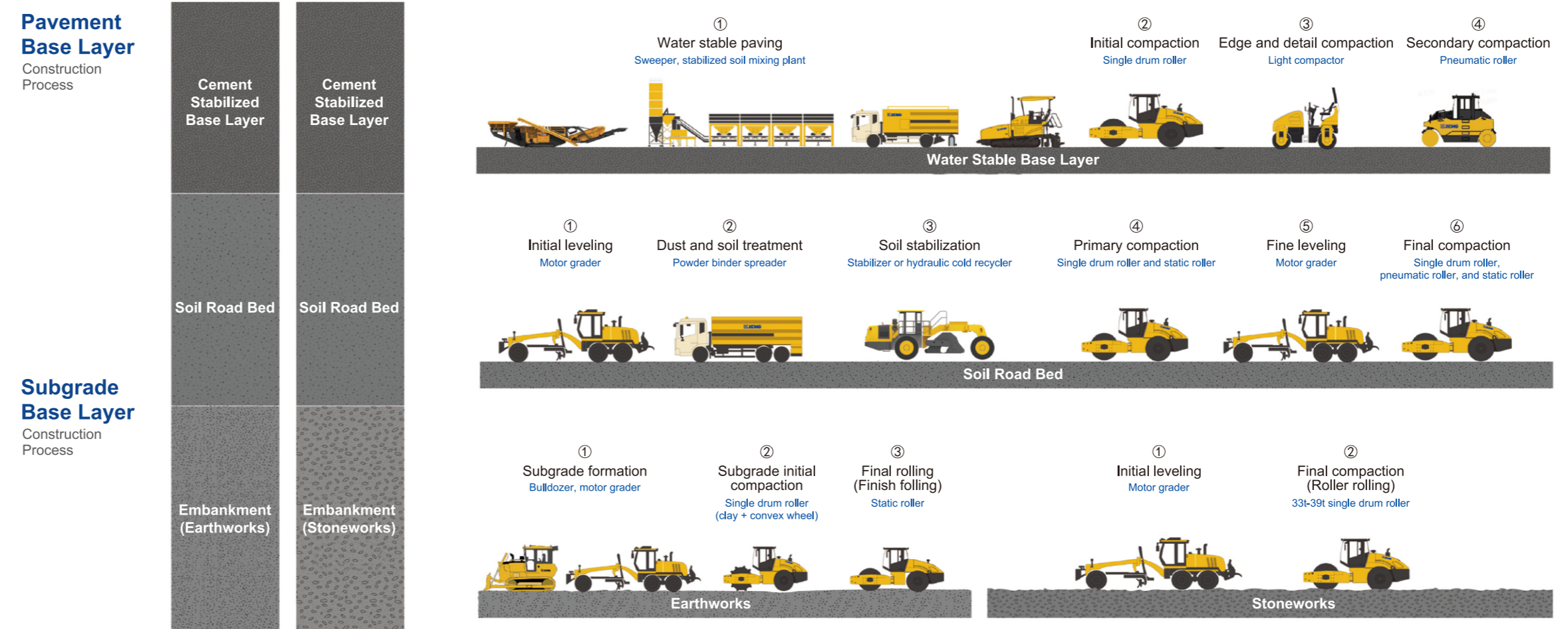
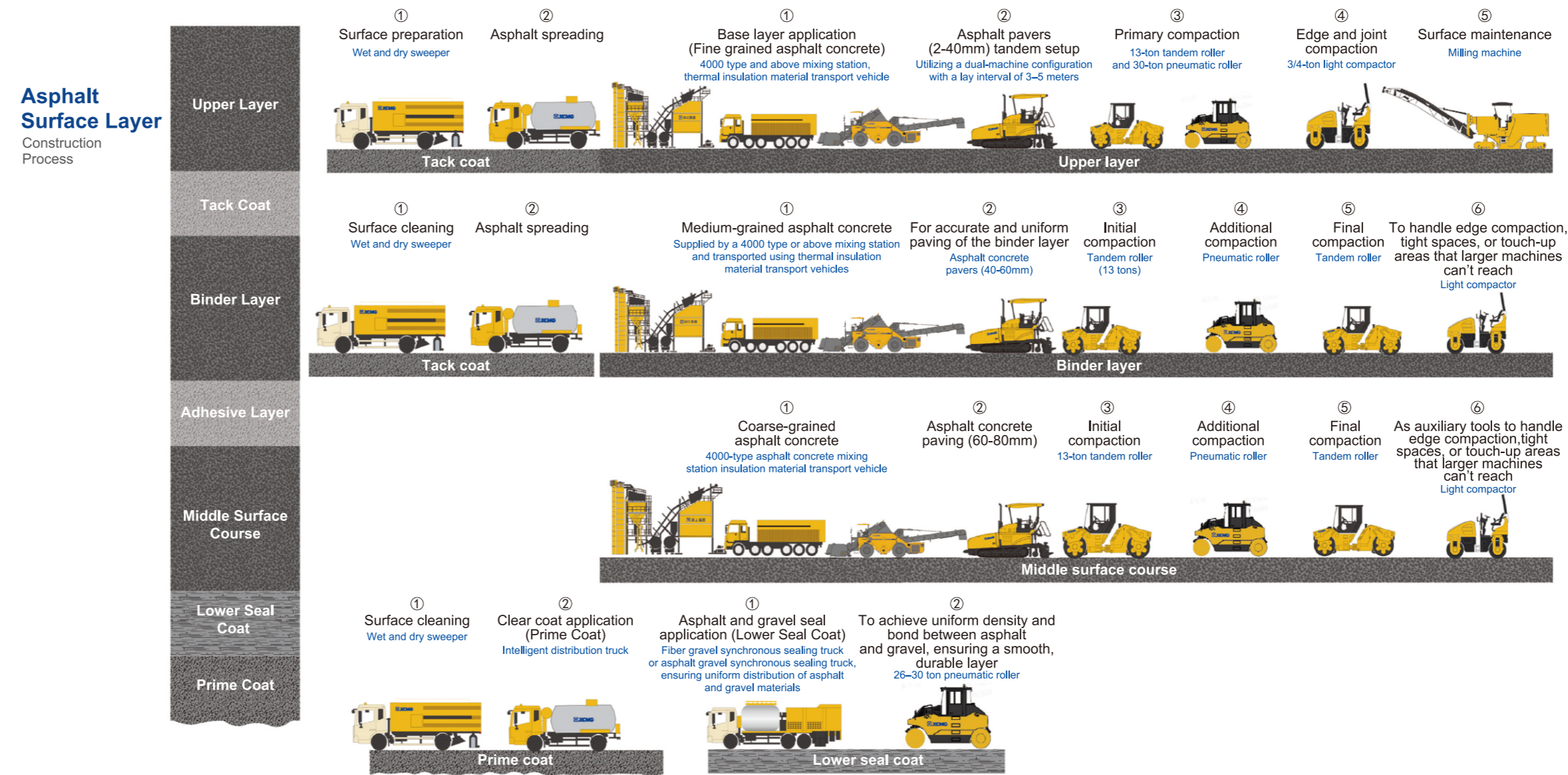
Adhering to innovation-driven development, XCMG Road Machinery Business Unit is the only R&D center in the industry officially recognized by the Ministry of Transport. XCMG Road Roller and Motor Grader have been awarded the titles of "China's Manufacturing Single Champion" and "China's Demonstration Enterprise of Manufacturing Single Champion" by the Ministry of Industry and Information Technology of China.



**SOLID TO SUCCEED**



严禁烟火



**Europe:** Poland, Belgium, Lithuania, Netherlands, Yugoslavia, Turkey.  
**America:** United States, Canada, Mexico, Nicaragua, Ecuador, Cuba, Venezuela, Panama, Costa Rica.  
**South America:** Argentina, Paraguay, Bolivia, Uruguay and Colombia  
**Africa:** Ethiopia, Ghana, Zambia, Kenya, South Africa, South Sudan, Uganda, Nigeria, Republic of the Congo, Sudan, Angola, Cameroon, Zimbabwe, Côte d'Ivoire, Malawi, Mozambique, Tanzania.

**Asia-Pacific:** India, Indonesia, Malaysia, Thailand, Viet Nam, Laos, New Zealand, Timor-Leste, Philippines, Republic of Korea, Australia, Cambodia, Bangladesh, Pakistan, Japan, Indonesia, Maldives, Sri Lanka, Myanmar, Bangladesh, Nepal, Singapore, Hong Kong and Brunei.  
**Central Asia:** Kazakhstan, Uzbekistan, Russia, Mongolia, Kyrgyzstan, Turkmenistan.  
**West Asia North Africa:** Saudi Arabia, UAE, Qatar, Iraq, Iran, Algeria, Morocco, Kuwait, Tunisia, Egypt, Saudi Arabia, Tunisia, Oman, Israel



# XCMG

## Complete Road Equipment Solution Provider

XCMG Road Products for Europe

SOLID TO SUCCEED

### XCMG ROAD MACHINERY:

- SINGLE DRUM VIBRATORY ROLLER
- TANDEM VIBRATORY ROLLER
- PNEUMATIC ROLLER
- LIGHT COMPACTION EQUIPMENT
- BACKFILL COMPACTOR
- STABILIZER, COLD RECYCLER
- DOZER
- PAVER
- MILLING MACHINE
- CRUSHING EQUIPMENT
- MOTOR GRADER
- VACUUM ROAD SWEEPER
- BULK GRAIN TRANSPORT SEMI-TRAILER
- MULTI-FUNCTIONAL GREEN MAINTENANCE TRUCK
- CHIPS SPREADER
- SLIPFORM PAVER
- ASPHALT PAVEMENT HOT RECYCLING REPAIR VEHICLE
- ASPHALT MIXING PLANT
- STABILIZED SOIL MIXING PLANT
- ASPHALT DISTRIBUTOR
- ASPHALT SYNCHRONOUS CHIPS SEALING VEHICLE
- POWDER BINDER SPREADER
- SLURRY SEALER
- PAVEMENT MAINTENANCE VEHICLE

SOLID TO SUCCEED

Under our policy of continuous product development and improvement, we reserve the right to change specifications and design without prior notice. Featured machines in photos may include additional equipment. Consult your XCMG dealer for available options and attachments.  
 For more complete information on XCMG products, dealer services and industry solutions, visit us on the web at [www.xcmg.com](http://www.xcmg.com). XCMG, XCMG for Your Success and [www.xcmg.com](http://www.xcmg.com), as well as corporate and product identity used herein are trademarks of XCMG and may not be used without permission.

Ref. No. XCMG210201P English  
XCMG



XCMG Road Machinery Business Unit



All products listed are currently available in the European region.

### ● SINGLE DRUM ROLLER



**XS83/PD**  
 Engine: Cummins  
 Power: 74kW  
 Weight: 8000/8430kg  
 Size: 5355×1860×3040/3120mm  
 Emission: Stage III



**XS123/PD**  
 Engine: Cummins  
 Power: 104kW  
 Weight: 12000/12850kg  
 Size: 5940×2300×3150/3240mm  
 Emission: Stage III



**XS165/PD**  
 Engine: Cummins  
 Power: 119kW  
 Weight: 16000/16800kg  
 Size: 6010×2300×3040/3145mm  
 Emission: Stage III



**XS185S/PD**  
 Engine: Cummins  
 Power: 142kW  
 Weight: 18000/18800kg  
 Size: 6990×2350×3200mm  
 Emission: Stage III



**XS205S/PD**  
 Engine: Cummins  
 Power: 142kW  
 Weight: 20000/20800kg  
 Size: 6990×2350×3200mm  
 Emission: Stage III



**XS265S/PD**  
 Engine: Cummins  
 Power: 164kW  
 Weight: 26000/26800kg  
 Size: 6990×2470×3260mm  
 Emission: Stage III

### ● TANDEM ROLLER



**XD80**  
 Engine: Kubota  
 Power: 16.1kW  
 Weight: 1600kg  
 Size: 2250×895×2475mm  
 2350×895×1580mm  
 Frequency: 45/62Hz  
 Emission: Stage V



**XD90**  
 Engine: Kubota  
 Power: 16.1kW  
 Weight: 1700kg  
 Size: 2250×980×2475mm  
 2350×980×1580mm  
 Frequency: 45/62Hz  
 Emission: Stage V



**XD120**  
 Engine: Kubota  
 Power: 25.6kW  
 Weight: 2850kg  
 Size: 2610×1286×2795mm  
 2910×1286×1845mm  
 Frequency: 63/67Hz  
 Emission: Stage III



**XD120VT**  
 Engine: Kubota  
 Power: 25.6kW  
 Weight: 2650kg  
 Size: 2610×1286×2795mm  
 2910×1286×1845mm  
 Frequency: 63/67Hz  
 Emission: Stage III

### ● TANDEM ROLLER



**XD140**  
 Engine: Kubota  
 Power: 33.6kW  
 Weight: 4300kg  
 Size: 2910×1515×2940mm  
 3250×1515×1980mm  
 Frequency: 53/60Hz  
 Emission: Stage III



**XD140VT**  
 Engine: Kubota  
 Power: 33.6kW  
 Weight: 4000kg  
 Size: 2910×1515×2940mm  
 3250×1515×1980mm  
 Frequency: 53/60Hz  
 Emission: Stage III



**XD140TT**  
 Engine: Kubota  
 Power: 33.6kW  
 Weight: 3200kg  
 Size: 2840×1290×2940mm  
 3180×1290×1990mm  
 Frequency: /  
 Emission: Stage V



**XD85T**  
 Engine: Kubota  
 Power: 53.7kW  
 Weight: 8000kg  
 Size: 4550×1860×3018mm  
 Frequency: 48/55Hz  
 Emission: Stage V



**XD105T**  
 Engine: Kubota  
 Power: 104kW  
 Weight: 10000kg  
 Size: 4790×1860×3080mm  
 Frequency: 45/55Hz  
 Emission: Stage III



**XD135T**  
 Engine: Kubota  
 Power: 104kW  
 Weight: 13000kg  
 Size: 4980×2310×3100mm  
 Frequency: 50/60Hz  
 Emission: Stage III

### ● MULTI TIRE ROLLER



**XTG85**  
 Engine: Kubota  
 Weight: 1660kg  
 Size: 1910×610×1300mm/1910×850×1300mm  
 Frequency: 42Hz  
 Power: 16.1kW  
 Emission: Stage V



**XP165S**  
 Engine: Cummins  
 Power: 104kW  
 Weight: 11300kg  
 Size: 5100×2175×3000mm  
 Weight range: 8500-16000kg  
 Emission: Stage III

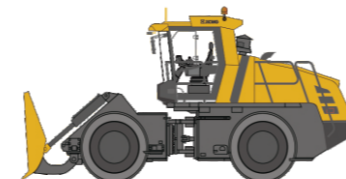


**XP265S**  
 Engine: Cummins  
 Power: 104kW  
 Weight: 24200kg  
 Size: 5100×2195×3000mm  
 2600×1300×680mm Insulated cover box  
 Weight range: 23000-26000kg  
 10000-26000kg by workshop  
 Emission: Stage III

### ● SOIL COMPACTOR



**XH235L**  
 Engine: Cummins  
 Power: 194kW  
 Weight: 23800kg  
 Size: 8300×3500×3845mm  
 Emission: Stage III



**XH285L**  
 Engine: Cummins  
 Power: 242kW  
 Weight: 28500kg  
 Size: 8300×3830×3845mm  
 Emission: Stage III

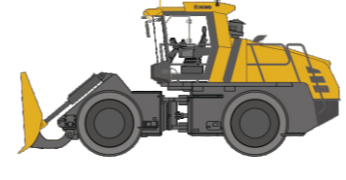


**XH365L**  
 Engine: Cummins  
 Power: 340kW  
 Weight: 36500kg  
 Size: 9281×4000×4066mm  
 9433×4450×4066mm with tilting mechanism  
 Emission: Stage III

### ● LANDFILL COMPACTOR



**XH285**  
 Engine: Cummins  
 Power: 242kW  
 Weight: 28500kg  
 Size: 8300×3830×3845mm  
 Emission: Stage III



**XH365**  
 Engine: Cummins  
 Power: 340kW  
 Weight: 36500kg  
 Size: 9281×4000×4066mm  
 Emission: Stage III

### ● ASPHALT PAVER



**RP355**  
 Engine: Cummins  
 Power: 53kW  
 Weight: 7900kg  
 Size: 4990×1450×1935mm  
 Paving Width: 1.2-2.2m, max 3.5m  
 Emission: Stage III

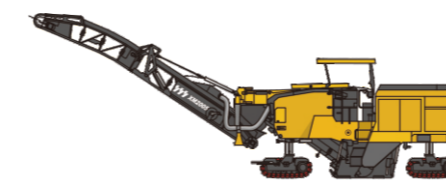


**RP455W**  
 Engine: Cummins  
 Power: 96kW  
 Weight: 11500kg  
 Size: 5864×2090×2972mm  
 Paving Width: 1.8-3.4m, max 4.5m  
 Emission: Stage III

### ● PROFILER



**XM505K**  
 Engine: Cummins  
 Power: 97kW  
 Weight: 8700kg  
 Size: 7300×1740×2650mm  
 Milling Width: 500mm  
 Max. Milling Width: 210mm  
 Emission: Stage III

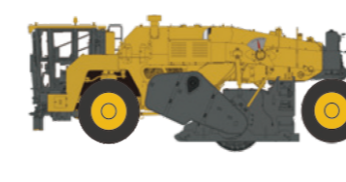


**XM2005K**  
 Engine: Cummins  
 Power: 447kW  
 Weight: 28500kg  
 Size: 12597×2500×3000mm  
 Milling Width: 2300mm  
 Max. Milling Width: 330mm  
 Emission: Stage III

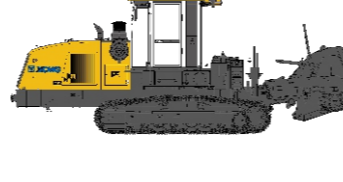
### ● STABILIZER



**XLZ650S**  
 Engine: Cummins  
 Power: 563kW  
 Weight: 26500kg  
 Size: 9330×3000×3450mm  
 Milling Width: 2300mm  
 Max. Milling Width: 500mm  
 Emission: Stage III



**XLZ2305K**  
 Engine: Perkins  
 Power: 571kW  
 Weight: 33500kg  
 Size: 9340×3220×3200mm  
 Milling Width: 2500mm  
 Max. Milling Width: 430mm  
 Emission: Stage III



**TS2503**  
 Engine: Cummins  
 Power: 343kW  
 Weight: 23500kg  
 Size: 9100×3100×3400mm  
 Milling Width: 2500mm  
 Max. Milling Width: 400mm  
 Emission: Stage V

### ● DOZER



**D200HPAT**  
 Coming Soon

### ● GRADER



**GR1003**  
 Engine: Cummins  
 Power: 100hp  
 Weight: 7500kg  
 Size: 7230×2375×3150mm  
 without ripper etc.  
 Blade Length: 3048mm  
 Emission: Stage III



**GR2405Tpro**  
 Engine: Cummins  
 Power: 220-240hp  
 Weight: 17500kg  
 Size: 9333×2625×3472mm  
 without ripper etc.  
 Blade Length: 3660/3965/  
 4270mm  
 Emission: Stage III



**GR2605Tpro**  
 Engine: Cummins  
 Power: 220-240hp  
 Weight: 19000kg  
 Size: 9448×2625×3500mm  
 without ripper etc.  
 Blade Length: 3660/3965/  
 4270mm  
 Emission: Stage III



**GR2605AT 6x6**  
 Coming Soon



**GR3505Tpro**  
 Engine: Cummins  
 Power: 335-350hp  
 Weight: 32000kg  
 Size: 11320×3400×4100mm  
 without ripper etc.  
 Blade Length: 4877/5500mm  
 Emission: Stage III



**GR5505Tpro**  
 Engine: Perkins  
 Power: 550-600hp  
 Weight: 74000kg  
 Size: 16430×4460×4810mm  
 Blade Length: 7300mm  
 Emission: Stage III

### ● BODY WITHOUT CHASSIS



**XKC183 Powder Spreader**  
 Engine: Cummins  
 Weight: 9000kg without chassis  
 Size: 8200×2550×3500 without chassis  
 Powder tank: 18m³  
 Max spreading width: 2400mm  
 Spreading density: 5-15kg/m²  
 Emission: Stage III



**XKC163 Powder Spreader**  
 Engine: Cummins  
 Weight: 9000kg without chassis  
 Size: 8200×2550×3500 without chassis  
 Powder tank: 16m³  
 Max spreading width: 2400mm  
 Spreading density: 5-15kg/m²  
 Emission: Stage III



**XTF1003 Chips Sealer**  
 Engine: Cummins  
 Weight: 1000kg without chassis  
 Size: 8525×2500×3461 without chassis  
 Asphalt tank: 6m³  
 Stone tank: 10m³  
 Max spraying width: 4000mm  
 Asphalt spreading density: 0.2-2kg/m²  
 Stone spreading density: 3-22L/m²  
 Emission: Stage III



**XLS705A Asphalt Distributor**  
 Engine: Yuchai  
 Weight: 6500kg without chassis  
 Size: 6400×2350×2700 without chassis  
 Asphalt tank: 7m³  
 Max spraying width: 4500mm  
 Spreading density: 0.2-3.0kg/m²  
 Emission: Stage III

### ● CRUSHERS & SCREENING



**XPE0810**  
 Engine: Yuchai  
 Power: 265kW  
 Weight: 45000kg  
 Working Size: 15280×4660×3820mm  
 Processing capacity: 300t/h  
 Emission: Stage III



**XPY1100**  
 Engine: Scania  
 Power: 364kW  
 Weight: 63750kg  
 Working Size: 22205×3550×5600mm  
 Crushing capacity: 110-440t/h  
 Max feeding width: 240mm  
 Emission: Stage III



**XFY1561**  
 Engine: Cummins  
 Power: 97kW  
 Weight: 35300kg  
 Working Size: 18682×18885×6103mm  
 Max feeding dims: 150mm  
 Screen box dims: 1550×6100mm  
 Emission: Stage III



**XPF1214D**  
 Engine: Yuchai  
 Power: 562kW  
 Weight: 74300kg  
 Working Size: 21663×13465×5179mm  
 Crushing capacity: 80-450t/h  
 Max feeding width: 700mm  
 Emission: Stage III

### ● ASPHALT MIXING PLANT

**XAP165**  
 Total Installed Power: 436kW  
 Production Capacity: 160t/h  
 Working Area: 1085m²



### ● STABILIZED SOIL MIXING PLANT

**XC600S**  
 Total Installed Power: 216kW  
 Production Capacity: 600t/h  
 Working Area: 728m²

**XC800S**  
 Total Installed Power: 257kW  
 Production Capacity: 800t/h  
 Working Area: 840m²

